



# ATRI News

July/August 2012

## 2012 Central Midwest Auto Recyclers Convention & Trade Show

Brought to you by:  
Indiana & Illinois & Surrounding States

# SAVE THE DATE!!

A pursuit of excellence in a state-of-the-art facility.

September 21<sup>st</sup> & 22<sup>nd</sup> 2012

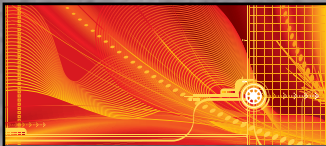
See Page 15 For More Info





# Upgrade your technology toolbox.

Hollander's cutting-edge technology solutions can help you sell more parts to more people with less effort.



## Powerlink<sup>®</sup>

Manage inventory and keep your parts moving.

A fully integrated solution that grows with your business.

- Flexible Order Process
- Dismantling Worksheets
- Custom Images
- Automated Parts Grading
- Bulk Part Maintenance
- Proscanner Bar Code
- Automated Pricing
- Vehicle Profitability
- Training and Support

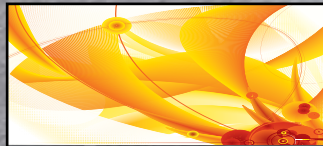


## EDEN<sup>®</sup>

Get connected to the largest nationwide parts network.

Let Hollander bring buyers to your inventory.

- EDEN Online
- EDEN Exchange
- EDEN Real Steel
- Unlimited Part Searches
- Images available with Locates and Exchanges
- Powerlink Data Backup
- RAS Buying Partnership
- EDEN Direct Hit
- EDEN Review
- Training and Support



## Production Manager

Get unparalleled control over every step of the production cycle.

Boost productivity, improve customer service, and save money.

- Manage resources efficiently with complete traceability
- Make any YMS more productive
- Real time status updates and alerts result in higher CSI scores
- Get control over yard production – no lost orders, parts or customers
- Simplify part locating and extend your trading community



## e-Link<sup>™</sup>

Expose your inventory to millions of new customers.

Take advantage of our exclusive eBay solution.

- Increased sales with unlimited parts listed online
- Increased profits with no-fee listing
- Expanded customer base
- Automated parts listing
- Automated inventory management
- Integrated order management

 eBay Motors



800-825-0644 | [www.hollandersolutions.com](http://www.hollandersolutions.com)

KEEPING ALL YOUR PARTS MOVING



## The ATRI NEWS

The *ATRI News* is published six times per year for the Auto & Truck Recyclers of Illinois. None of the material in this publication necessarily reflects the opinion of ATRI, its officers, directors, staff, members or its Publisher. Statements of fact and opinion are the responsibility of the author alone.

Articles and letters suitable for publication will be published in the next scheduled newsletter as space permits. Material should be sent to:

Michelle Lechner  
Executive Director, ATRI  
PO Box 654  
Ottawa, IL 61350  
illautorecyclers@aol.com

Articles may be edited for length and format.

Throughout this issue, trademarked names are used. Rather than place a trademark symbol in every occurrence of a trademarked name, we state we are using the names only in an editorial fashion, and to the benefit of the trademark owner, with no intention of infringement of the trademark. Mention of trade names, commercial products, or techniques does not constitute endorsement or recommendation for use.

## Auto & Truck Recyclers of Illinois 2012 Board of Directors

### Larry Brosten President

Auto Parts City, Inc  
Ph: 847244-7171  
Fax: 847/244-7279

### John Catalano, Jr. Vice President

Bionic Auto Parts  
Ph: 773/489-6020  
Fax: 773/489-4722

### Andy Zalon Secretary/Treasurer

C & J Auto Pars Inc  
Ph: 800/783-8121  
Fax: 773/523-1158

### Joe Watson Immediate Past President

ABC Auto Parts & Sales, Inc.  
Ph: 708/389-1456  
Fax: 708/389-5126

### David Anderson

I-55 Auto Salvage, Inc  
Ph: 815/467-2938  
Fax: 815/467-7152

### Sean Krause

Speedway Auto, LTD  
Ph: 800/437-8733  
Fax: 815/726-9427

### John Catalano

Bionic Auto Parts  
Ph: 773/489-6020  
Fax: 773/489-4722

### Rich Aukland & Jeff Middleton

Rhodes Auto S/S/S  
Ph: 815/673-3737  
Fax: 815/672-5430

### Jack Reichel

Chicago Industrial Catalytic  
Ph: 321-914-6666  
Fax: 847-236-9725

### Rob McCartney

Macks Recycling  
Ph: 217/367-6219  
Fax: 217/367-9001

### Scott & Travis Mefford

Scotty's Auto Parts  
Ph: 217/452-3081  
Fax: 217/452-3299

### Bryan Tsikouris

Market Financial Group  
Ph: 847/398/7060

### Eric Gallay

Wood River Auto Parts  
618-259-6432

### Michelle Lechner

### Executive Director / Lobbyist

Ph: 877/880-2874  
Fax: 217/793-2277

***This publication is mailed free of charge to  
Automotive Recyclers in Illinois.  
This newsletter is supported by the Advertisers.  
Please thank them through your patronage.***

## Advertising Contact

ATRI retains the publishing services of  
R. J. McClellan Inc. for the publishing of this newsletter.  
Monday - Friday, 8AM - 4PM  
Phone 651-458-0089 • Toll Free 877-525-4589  
Fax 651-458-0125 • Email newsletters@rjmc.com

**Ron McClellan**      **Sheila Cain**      **Ryan McClellan**  
Advertising Sales   Creative Director   Layout and Design

## ATRI Contact Information

### Executive Director / Lobbyist

### Michelle Lechner

PO Box 654  
Ottawa, IL 61350  
Ph: 877/880-2874  
Fax: 815/434-1227  
Email: illautorecyclers@aol.com  
www.IllinoisAutoRecyclers.com





## President's Perspective

Larry Brosten, ATRI President

When Michelle Lechner and I first discussed the possibility of my appointment as president of ATRI, there were a couple of things we both agreed on that would make it even stronger. The first was making sure we stayed in close contact with the membership, and the second was increasing the number of auto recyclers who belong to ATRI.

I took those discussions seriously. So seriously, in fact that I'll be hitting the road this summer to visit various parts of Illinois. During the road trip I intend to stop by member facilities and touch base with various member businesses. And while I'm in the neighborhood, I also will make it a point to pay a visit to auto recyclers who are not currently members.

ATRI has an important role to play in the future of our industry. Not only is it a way to exchange insights and ideas to make all our businesses stronger, but it also plays a role in helping to impact state statutes important to auto recyclers.

As ATRI works in Springfield to stay abreast of pending legislation and offer our input, one thing we have discovered about lawmakers is that most of them ask the same question:

"How many members do you have in ATRI?" The implication is clear: they understand and respond to numbers. Part of the strength of our organization is represented by the number of members who belong to it.

Of course, that means that we have to continue to build ATRI into the type of trade organization that auto

recyclers will want to join. With that in mind, during my road trip, I look forward to hearing your thoughts about the future of our industry and our organization. Also, if you want to pass the contact information of another potential member please feel free to do that.

So, if you have some time to spare and would like me to stop by, or if you know of another auto recycler in your area that would make a good ATRI member, contact Michelle or I so we can schedule a visit.

See you soon.

**ICI** Insurance Consultants, Inc.<sup>®</sup>  
Martin Satz Insurance

*Insuring the Salvage & Recycling Industry Since 1976*

***Please contact us for a  
Competitive Quote and ask Our Clients  
about our Exceptional Service***

**800-449-1151**



401 N. Lindbergh Blvd., Suite 322, St. Louis, MO 63141  
ph: 314.994.1151 | tf: 800-449-1151 | fax: 314.994.7494  
www.InsuranceConsultantsInc.com



## Executive's Viewpoint

Michelle Lechner, Executive Director



It seems all is quiet on the home front, but actually that is not entirely true. There are a couple issues brewing it seems, all the time. Legislatively, a couple bills are at the forefront, but with no end result. I guess that means I can't really update you on them. Make sure to catch the next issue though, you will be glad you did.

IEPA is telling me we are not reaching our capture rate of removing mercury switches. Maybe we are just running out of those vehicles that have them? There is still money in the till, so you are still getting paid for them. Once in a while I hear from one of you who say's they have not been paid in a long time. Becky Jayne from IEPA, is always willing to help and answer any questions you have concerning this issue. Please feel free to contact her or me, and we will get the answers to your questions.

As long as we stay well connected and keep a strong relationship with both IEPA and the legislative arena, our association will stand a better chance of being informed, called upon, and involved with any issue that pertains to our industry. ATRI has been a voice heard more than ever before. Our recycling facilities are no longer "junk yards".

I am attending the conference for the Illinois Recycling Association in Rockford, IL, this coming Monday, and I am excited to do so. I hope to come away with ideas and information that maybe you, the members of ATRI can use. See? Our name is getting out there, I guess? I was personally invited to attend this event. When I look back over the years, I am truly amazed on how far this industry has come. The knowledge that is available to you all is tremendous. So much more interest in the Auto recycling industry than ever! I guess that is a proven fact, we can tell from all the others out there wanting to hang their shingle as an auto recycler. I also hear some of you say

"why should I follow all the rules when "Joe Blow" isn't"? I understand why you feel that way, but honestly, would you want to be on that side of things? Probably not...

As always, I am encouraging membership. If you have not renewed your membership for 2012, you need to in order to continue to be listed in the newsletter that goes out 6 times a year, receive emails with information vital to your business, and to get the continuing education ATRI has to offer. Don't forget the credibility you get from just



### Quick Pay & Top Prices Since 1936

#### We Buy All Metals including...

- Insulated Copper Wire
- Aluminum & Brass Radiators
- Aluminum Wheels
- Catalytic Converters
- Starters and Alternators
- Scrap Iron & Steel
- Automotive Cast Iron

**P: 314.481.2800 • TF: 800.527.6865**  
**F: 314.481.4703**

*Pick Up Service Available.*

**6400 South Broadway • St. Louis, MO 63111**



# Auto & Truck Recyclers of Illinois Association News

6

July/August 2012

putting your ATRI sticker in the window of your place of business. ATRI has a bigger membership and bigger voice than ever. Pass the word for me would ya? This summer some of the ATRI Board is going to have a membership drive. Literally, we are going to go around the state and make some new contacts, and hopefully get more recyclers to come on board with us.

Ok, so you saw the cover of this newsletter, and I hope it strikes your interest? It speaks for itself, and I think this event is definitely one that will go down in the books as one of the BEST EVER. I guarantee, you will walk away being glad you did not miss this opportunity for the education, training, and all around great time you had. The Dallara Indycar Factory is fabulous!!! The tour is very impressive, and it all happens right there. Saturday night, Pic-A-Part Used Auto & truck Parts in Indianapolis, is hosting a cookout/yard tour. Again, it's very impressive and

worth the visit. You can visit [www.CMARConvention.com](http://www.CMARConvention.com) for more details. Start your summer fresh and educated! See you all there.

Keep Recycling,  
Michelle Lechner

## Auto & Truck Recyclers of Illinois Have a new address

Michelle Lechner  
Executive Director  
Auto & Truck Recyclers of Illinois  
PO Box 654  
Ottawa, IL 61350  
ph:877/880-2874  
fax:815/434-1227  
ILLAutoRecyclers@aol.com



## CHICAGO INDUSTRIAL CATALYTIC LTD.

*Specialists in:*

- ✓ *catalytic converters*
- ✓ *catalysts*
- ✓ *metals*
- ✓ *alloys*

***Please call to schedule a pick up!***

**Phone: (312) 914-6666**

**Fax: (847) 236-9725**

Warehouse - Chicago, IL



## ATRI Past President Letter

Joseph Watson

Back in the old days we used Hollander books, card systems to keep track of inventory, and knowledge of where parts were, and what parts interchanged with others. Then came the computer; and the Hollander Yard Management System, also known as HYMS. Life as we knew it as auto recyclers changed. Access to interchange was faster, access to our inventory was immediate. Knowing what to remove from the vehicles became easier, and we became better as a business. That was almost 30 years ago. We became dependent on our computers to run our business. Reports were easy to compile, knowledge as to what to stock and what to discard became little more than running a report and making changes. We put our trust and faith in our computer system and it serves us well. We followed procedures and maintained our computers; backups, updates, and annual cleaning of the dust that accumulated in the computers.

In May 2012 we noticed that our computer system was running slowly. I ran diagnostics, but all reports indicated that there were no issues, but still it ran slower and slower. When I arrived into work one Monday morning the system failed. Our computer server had catastrophic failure and we without our main computer. We were in crisis mode. Our work stations were still accessible, we had the internet, and we could access inventory using Car-Part.com; however we did not know where the parts were located. Our constant diligence on bin checks, and report running paid off. We were able to find our parts by using the reports stored on our work stations. Our employees needed to work smarter, answering phones, taking information, calling customers back.

We came to the understanding that our customers did not need to know immediately if we had the parts. They did need to know if we could fill their needs, however what we thought was instant information became a need for accurate information. Strangely sales exceeded that of when we had all access to the information immediately. Sales increased. In crisis mode we were able to better fulfill the needs of our customers. In our moments of darkness we asked for more information from our customers, we chose to focus on sales that would make money, and disregard sales that would cost too much time to fill and make little to no money.

Every customer that calls needs something. Every customer that calls is a buyer. They need a part to fix their vehicle or a vehicle they are working on. All customers will cost you time but for some you will not be able to make enough money on the sale to justify the time to fill the order. Our crisis solidified the concept that not every customer can be serviced. Sometimes you need to say 'No'. Sometimes it is better to recommend another recycler, an OEM dealership, or an aftermarket supplier.

# RHODES

Auto S/S/S INC.

815-673-3737

800-548-9151

Fax 815-672-5430

401 WEST 10TH STREET, STREATOR, IL 61364

[www.rhodesautosss.com](http://www.rhodesautosss.com)

IN THE QRP NETWORK, WE HAVE 34 LOCATIONS IN  
9 STATES AND 1.3 MILLION PARTS IN INVENTORY



★ ARA ★ GOLD SEAL ★  
★ CAR CERTIFIED ★







During this crisis I learned is that sometimes you need to be a little tougher when dealing with your software provider. I tend to try being nice when dealing with people. You get to a point when the nice guy routine does not get you what you need. When I started calling supervisors and department heads I got a quicker and better response. Customer service people and low level techs can only do so much for your crisis. Anger gets a better response than being nice. Start with nice, and then move to anger if necessary. I personally still prefer nice.

Another thing I learned is that getting a new server is not like going to a store and picking one up. They need to be ordered, and that takes some

time. If your server is no longer under warranty, order a new one. It is better to replace a server that is working fine, than to have a server fail. Apparently five (5) years is the life expectancy of a server, which is why the warranty is only five (5) years.

At the end of the crisis we were without a server computer for six working days. Hollander, our yard management software company, was able to send us a working server substitute. We ordered a new server and had it in place in a few more days. We are up and running and learned a valuable lesson on customer expectations. I hope this experience does not happen to any of you, it was hell.

---

---

## Meeting the Illinois Green CAR Training Standards is Easier than You Think

By David Kendziorski, Illinois Green CAR Program Manager

This article is one of my favorite topics: how to keep things simple. Environmental and safety training is an important part of remaining in compliance with regulations, protecting your employees, and preventing environmental hazards. The Illinois Green CAR (Certified Automotive Recycler) program standards include

some (though not all) of the most critical requirements. For example, OSHA has developed over 100 specific safety standards that could potentially affect auto recyclers; Green CAR has selected seven of the standards for inclusion in our safety standards. These Green CAR standards are considered to be most relevant to our industry. Several of the standards have a training element, and there are a wide variety of options available to obtain that training:

- ARA University (web-based)
- ARA Pro Airbag Training (web-based)
- Technical schools, universities, and community colleges
- Government agencies (OSHA offers training and educational programs)
- Training offered by consultants, vendors, and equipment manufacturers



[www.globalpartssolutions.com](http://www.globalpartssolutions.com)

**Specializing in  
New Take Off & OEM Surplus  
Pickup Beds, Bumpers, Cabs, etc.**

Wisconsin: Rod Egelseer • 414-861-8442  
U.P. of Michigan: Don Egelseer • 906-360-5940

3170 Hwy 60 • Jackson, WI 53037





- Training sessions at industry (ATRI, ARA, URG, I-CAR, ISRI, etc.) conventions

These training requirements should of course be taken seriously, and owners and managers must make sure that the training is provided by qualified instructors and the material is relevant to our industry and meets regulations. The training provided by the above-listed sources is excellent, and auto recyclers should make full use of those services. But training should also be affordable, convenient, and readily repeated and documented. The following is a summary of how to easily meet the Green CAR training requirements without sending an employee to a class or hiring a consultant:

- **Annual Stormwater Employee Training** – You don't need a consultant to perform your annual training or to fill out your Annual Report. Do it yourself. Summarize your stormwater permit requirements and walk through your facility with your employees. Point out potential sources of stormwater contamination and the best management practices that are listed in your stormwater pollution prevention plan. Focus on items (such as spill control or pavement sweeping) where improvement is needed. Upon request, I am happy to provide stormwater training for your employees free of charge during the Green CAR audit.
- **Forklift Training** – Forklift accidents are serious and largely preventable. Be sure to combine classroom and hands-on training...and follow the OSHA guidelines. Contrary to what many people believe, there are no "certified" trainer or "train-the-trainer" requirements. Anyone who has sufficient experience and knowledge can offer the training. But be sure to document the training, which must be repeated at least every three years. Some of the best training is offered internally on your own equipment. In a recent issue of Automotive Recycling (March/April 2012), Joe Watson from ABC Auto Parts

described the outstanding OSHA-based and hands-on training he provides his forklift operators. If you feel you need outside expert help, then make the investment. Sorry – I can't help you with this – never been on a forklift.

- **Airbag Shipping Training (Hazardous Transportation Training)** – Hazardous shipping training can be obtained by shipping companies (UPS and FedEx). The training program offered by ARA Pro Airbag is comprehensive – covering shipping and many other airbag issues. Let's face it: airbag shipping training is really simple: an overview of the regulations and some simple safety precautions, how to fill out the label and forms, and how to box the airbag component. The training usually takes about 20 minutes and must be repeated every three years. There are no "certified" trainer requirements. If you have attended the training and are confident you understand the instructions, go ahead and offer the training to your employees. Document the training. Upon request, I will offer the training to your employees during the Green CAR audit.
- **Hazardous Communication Training** – Your designated safety supervisor should prepare a written hazard communication plan, compile and maintain Material Safety Data Sheets (MSDS), conduct regularly scheduled safety meetings, conduct annual safety inspections, and comply with posting and reporting requirements.
- **Torch Safety Protocol** – ARA has developed a two-page discussion of about 20 safety guidelines for torch cutting. Download the document (Torch Use Education & Orientation) from the ARA website ([www.a-r-a.org/files/torch\\_protocol\\_2009.pdf](http://www.a-r-a.org/files/torch_protocol_2009.pdf)). Review the document with any employees authorized to use a cutting torch, and have the document signed by a supervisor and the employee.



## ***Discover the Benefits of Being an ATRI Member!***

### ***Illinois Green Car Program (Illinois Certified Automotive Recyclers)***

Illinois Green Car recognizes and certifies that the member meets certain criteria in terms of environmental impact, safety, licensing and other regulatory standards as well as general business practices. This program is endorsed by the Illinois EPA and is cost effective. For just \$50 a year you can become CAR certified through the National Association. ATRI has an established a working relationship with Illinois EPA so if you have questions for them but don't want to call, ATRI will be glad to make the call and provide you the answers.

***ATRI Executive Director*** is a lobbyist for the association and engages legislative issues pertaining to Illinois auto recyclers. Through the Executive Director, ATRI engages in lobbying efforts and has established relationships with government agencies including the Secretary of State of Illinois.

### ***Education and Training Opportunities***

ATRI provides training throughout the year. Additionally, ATRI provides educational programs, social events, yard tours, and networking with fellow recyclers.

Opportunities to network, share and learn from other recyclers. See what works and what does not.

### ***ATRI Newsletter is published 6 times a year***

The newsletter is currently mailed to all recyclers in Illinois. The newsletter includes industry news, a complete listing of the membership, updates on legislative and environmental issues and lots of other interesting information I am sure you will find useful in your day-to-day business operations.

### ***CMARC Central Midwest Auto Recyclers Convention and trade show held annually***

This event rotates between Illinois and Indiana. This event is designed to bring recyclers and vendors together from all over to network, educate, and provide and encourage camaraderie. We invite our fellow recyclers from surrounding states to attend our convention and trade show, which clearly makes CMARC a regional show like none other.

### ***Website and staff accessibility, [www.illinoisautorecyclers.com](http://www.illinoisautorecyclers.com)***

- All members are listed on the website with all of your information, including a link to your website, if available.
- Newsletter archives
- Calendar of Events, as they are scheduled.
- Parts Search, an opportunity for each member to sell parts.
- Suppliers list, a complete list of suppliers, associate members of ATRI.
- All contact information for the ATRI Board of Directors and Staff.
- Staff accessible to answer all your questions, or find the answer for you.
- Information friendly, ask ATRI to email the membership with an article or question you may have.

***ATRI is a member of the Automotive Recyclers Association***, the National association for auto recyclers. ATRI is active by participating at the ARA conventions and sharing that information with ATRI Members.

***All Illinois recyclers encouraged to join ATRI and make a difference by getting involved. Support your state association and reap the great benefits of the membership.***



# Auto & Truck Recyclers of Illinois Association News

July/August 2012

11



## Auto & Truck Recyclers of Illinois

### Application for Membership

Please print or type

Business Name \_\_\_\_\_

Contact Name \_\_\_\_\_

Address \_\_\_\_\_

City \_\_\_\_\_ State \_\_\_\_\_ Zip \_\_\_\_\_

County \_\_\_\_\_

Phone \_\_\_\_\_ Fax \_\_\_\_\_

E-mail \_\_\_\_\_

Website \_\_\_\_\_

### Type of Business Activities

(CHECK ALL THAT APPLY)

- |   |                                      |  |
|---|--------------------------------------|--|
| <input type="checkbox"/> Recycler             | <input type="checkbox"/> New Parts   | <input type="checkbox"/> Body Shop       |
| <input type="checkbox"/> Automotive Mechanics | <input type="checkbox"/> Towing      | <input type="checkbox"/> Import Vehicles |
| <input type="checkbox"/> Domestic Vehicles    | <input type="checkbox"/> Light Truck |  |
| <input type="checkbox"/> Other _____          |                                      |  |

### Investment

- |   |          |
|---|----------|
| <input type="checkbox"/> 1-4 Employees .....  | \$250    |
| <input type="checkbox"/> 5-9 Employees .....  | \$375    |
| <input type="checkbox"/> 10 + Employees ..... | \$500    |
| <input type="checkbox"/> Associate. ....      | \$250    |
| Amount Remitted .....                         | \$ _____ |



### Mail Completed Form to

Auto & Truck Recyclers of Illinois  
PO Box 654 • Ottawa, IL 61350

Fax: 815/434-1227 • Email: ILLAutoRecyclers@aol.com

**QUESTIONS CALL: 877.880.2874**



# ATRI Direct Members

**111 Salvage, LLC**  
Granite City  
618-344-9922

**A+North Ave, Auto Parts  
Wreckers and Recycling**  
Villa Park  
630-832-1936

**A Affordable Auto Parts, Inc.**  
Joliet  
815-722-9072

**A&A Midwest Rebuilders  
Suppliers Inc.**  
Blue Island  
702-649-7776

**ABC Auto Parts & Sales Inc.**  
Riverdale  
800-458-7838/708-389-1456

**Aero Auto Parts**  
Chicago  
800-371-2620/773-483-2625

**Auto Parts City, Inc.**  
Gurnee  
847-244-7171

**Available Auto Parts**  
Decatur  
800-252-0780/217-877-1000

**B-Auto Parts**  
East St., Louis  
800-851-3157

**BC. Automotive, Inc**  
Zion  
800-452-6768/847-746-8056

**Big Top Auto Parts**  
Ford Heights  
708-758-6433

**Bill Smith Auto Parts, Inc**  
Danville  
800-252-3005

**Bionic Auto Parts & Sales Inc.**  
Chicago  
800-626-9618/773-489-6020

**Broadway Auto Salvage**  
Braceville  
815-237-8747

**Bryants Auto Parts & Recycling**  
Westville  
217-267-2124

**C & J Auto Parts, Inc.**  
Chicago  
800-783-8121/773-523-8121

**Captain Todd's Wrecked Cars, Inc**  
Springfield  
800/252-1079

**Chicago Heights U-Pull-It**  
Chicago Heights  
708-758-0002

**Cimco Recycling**  
Ottawa  
815-433-0031

**City Auto Wreckers**  
Aurora  
630-898-2900

**Coast to Coast International**  
Quincy  
217-228-8330

**Collins Truck Parts Inc**  
Tamaroa  
618-496-5003

**Coultas Recycling Company**  
Danville  
217-443/0510

**Decatur Auto Parts**  
Decatur  
800-728-8733/217-877-4371

**Elgin Super Auto Parts**  
Elgin  
847-695-4000

**Fierge Auto Parts**  
Quincy  
217-224-3000

**Geiger Truck Parts**  
Watseka  
815/432-4944

**I-55 Auto Salvage Inc.**  
Channahon  
815-467-2938

**International Auto Brokers &  
Sales Corp.**  
Palatine  
847-776-0680

**Junction Auto Parts/  
Graceffa Co., Inc.**  
Caledonia  
815-765-2731

**Kankakee Auto Recyclers**  
Kankakee  
815-939-3534

**LKQ, A-Reliable Auto Parts**  
Blue Island  
708-385-5595

**LKQ Heavy Truck ARSCO**  
Chicago Heights  
708-755-7133

**LKQ Metro**  
Caseyville  
618-345-9659

**LKQ Self Service Auto Parts**  
Rockford  
815-397-2277

**Mack's Auto Recycling, Inc.**  
Urbana  
217-367-6219

**Mullins Auto Parts**  
Mt. Olive  
217-999-2030

**Neal Auto Parts**  
Peoria  
309-673-7404

**New Cats Auto Parts**  
Chicago  
773-947-0500

**Ogra Auto Inc.**  
Chicago  
773-804-1771

**Rebutcars**  
Naperville  
630-527-0524

**Rhodes Auto S/S/S Inc.**  
Streator  
815-673-3737/800-548-9151

**River Valley Auto Parts**  
Kankakee  
815-936-0406

**Rockford Auto Parts, Inc.**  
Rockford  
815-964-3396

**Route 14 Auto Parts**  
Woodstock  
815-338-2800

**Sarabia Auto Parts**  
Chicago  
312-927-6262

**Scotty's Auto Parts**  
Virginia  
800-346-4540/217-452-3081

**Shelby & Sons, Inc.**  
West Frankfort  
618-932-3083

**Southwest Auto Salvage, Inc.**  
Lockport  
815-723-6878

**Speedway Auto, Ltd.**  
Joliet  
800-437-8733/815-726-0666

**Speedway Auto Parts &  
Wreckers, Inc**  
Chicago Heights  
708-758-0002

**Stafford's Inc.**  
Montgomery  
800-437-1770/630-896-1342

**Tom's Auto Inc.**  
Hainsville  
847/546-5422

**U Pull it North**  
(LKQ A-Reliable North)  
Chicago  
773-489-1321

**U Pull it South**  
(LKQ A-Reliable South)  
Blue Island  
708-597-5128

**Wood River Auto Parts**  
Cottage Hills, IL  
618-259-6432

**Y-Yard Auto and Truck, Inc.**  
Effingham  
217-536-6116



## Behr Iron & Metal Launches a \$30 Million Expansion

Ferrous, Nonferrous, Equipment & Products, Auto Shredding

Behr Iron & Metal, headquartered in Rockford, Ill., is expanding its presence in the Midwest at what the company says is the fastest pace in its 105-year history. To meet the demands of its customer base, Behr recently embarked on a \$30 million plant expansion that will put modern scrap processing technology into its Peoria, Ill., and South Beloit, Ill., yards. The company adds that the new equipment will expand its overall capacity and help position Behr for significant growth going forward.

Mike Schwebke, Behr vice president of operations, says, "We're just doing what Behr Iron & Metal has always done in uncertain economic times – invest big in the future."

The expansion includes the installation of a Metso shredder at a Behr's Peoria facility. The shredder started operating in March 2012.

The 104-inch, 5,000-horsepower shredder is expected to increase the capacity of the facility from 60 tons per hour to 120 tons per hour, the company says.

In addition to the shredder, Behr also invested in a host of other equipment, including the installation of an \$1.1 million metal recovery system that includes a Steinert US DMS Separator to recover ferrous nuggets and ferritic dirt, according to Ridley Stone of Wendt Corp., as well as a Wendt Titech Finder. This is the first time the DMS and Titech Finder have been used in combination on the ferrous downstream to mine the metal from the fluff recovered by the pre-magnet air system, Stone adds.

He adds, "This project is the first of its kind and it was completely tested, engineered and designed by Wendt using our experience, processes and technology."

"Until now, the technology didn't exist for us to efficiently, or economically, recover the relatively small amounts of copper wire, light tin and other ferrous and nonferrous materials that remained in what we call fluff, Schwebke says. He adds that the equipment will enable Behr to sort, separate and recycle an additional 2 to 3 percent of material that would have gone to landfills. "This may seem relatively inconsequential, but it's really quite significant when you consider we produce some 200 tons of fluff each day," Schwebke adds.

Behr's South Beloit facility also is undertaking a similar expansion, with a DMS Separator on order to sort auto shredder fluff coming out of one new line, and two existing lines of eddy current separators and air separators.

*Reprinted with permission of the Recycling Today Media Group, [www.recyclingtoday.com](http://www.recyclingtoday.com)*



**AUTO PARTS & RECYCLING**  
*Serving Illinois and Beyond Since 1946*  
**800-437-1770**

E-mail: [stafdrused@aol.com](mailto:stafdrused@aol.com)  
Local #: 630-892-4218

900 North Main Street  
Montgomery, IL 60538

Visit our website [www.staffordsautoparts.com](http://www.staffordsautoparts.com)



## Waubonsee Community College Seeking Candidates

Waubonsee Community College is seeking qualified candidates for our full time Automotive Recycling Program Developer opening.

### Essential Responsibilities:

- Develop automotive recycling courses and program curricula to be delivered in a hybrid format (online and face to face).
- Collaborate with the CTLT Manager, technical staff, and IT to create courses in the Department of Labor's NTER course management system. Incorporate learning-centered principles and practices.

- Organize and schedule automotive recycling course schedules to meet the needs of Trade Adjustment Assistance learners.
- Teach and pilot in the basic automotive recycling certificate as part of a 40 hour work week and assist other program faculty as needed.
- Work with the grant team to market and recruit students for the program.
- Participate in IGEN TAA meetings to include 4 quarterly two-day retreats.
- Implement courses that are SCORM (sharable content) compliant and in full compliance with the Americans with Disability Act and Sections 504 and 508 of the Federal Rehabilitation Act of 1973.

### Minimum Qualifications:

- Bachelor's degree in automotive technology, instructional design, education or related field required.
- Three years of experience in the field of automotive technology or career and technical education required.
- Teaching experience and/or equivalent occupational experience in the field of automotive technology.
- Experience incorporating technology into teaching and learning.
- Willingness to teach a night or Saturday course as needed.

*\*\*This position is 100% grant funded.*

To learn more and to apply, please visit our employment website <http://www.waubonsee.edu/employment/index.php>.

Waubonsee Community College is an Equal Opportunity Employer.



### ADD is your source for salvage vehicle reporting and more.

Free and Full Service NMVTIS reporting Vehicle History Reports with Lien & Theft data Owner/Lienholder search in 25 states

Enter Promo code **RJMC12** to receive \$50 off account activation.

For additional information, visit [ADD123.com](http://ADD123.com) or contact us at [salvage@add123.com](mailto:salvage@add123.com)



**AutoDataDirect, Inc.**





## **ARA's New Safety Committee Begins Regular Safety Tip Feature This Week on OSHA Approved Gas Cans**

Reading this Tip could save you \$500!

In an effort to make sure that individual automotive recyclers are aware of safety practices required by the U. S. Occupational Safety and Health Administration (OSHA), ARA's new Safety Committee, chaired

by Doug Reinert, has decided to post regular safety tips in as many media outlets as possible, starting with ARA's weekly e-newsletter. The subject of the Tips will be determined by the Committee as members

**dallara**  
INDYCAR FACTORY

### **2012 Central Midwest Auto Recyclers Convention & Trade Show**

Brought to you by:  
Indiana & Illinois & Surrounding States

Admission also includes a chance to win a ride in a high-speed  
IndyCar 2-Seater with the IndyCar Racing Experience!

September 21<sup>st</sup> & 22<sup>nd</sup> 2012  
Dallara IndyCar Factory  
Indianapolis, Indiana

Visit the website at [www.cmarconvention.com](http://www.cmarconvention.com)!

# **SAVE THE DATE!!**

A pursuit of excellence in a state-of-the-art facility.



learn more themselves about specific OSHA requirements and the fines associated with noncompliance.

**Our first Tip addresses what type of gas can you need to use and could save you \$500.**

According to OSHA, a facility should only use gas cans holding 5 gallons of gas or less, with a spring-closing lid and spout cover, a means to relieve internal pressure and a flash-arresting screen. The spring-closing lid and spout cover is designed to keep liquid and vapor from escaping at ordinary temperatures and to lift slightly when exposed to excessive outside heat. The most common safety can is the short and round red metal can with yellow labeling. Some however, are now available in high-density polyethylene plastic.

U.S. Department of Transportation (DOT)-approved containers are used more often by the general public. DOT-approved gas cans, or "jerry cans," have a screw-on cap instead of a spring-closing lid, spout

cover or flash-arresting screen. They **do not meet the "safety can"** definition, but OSHA has decided that they pose very little hazard and meet the basic intent of the standard. DOT-approved gas cans will be labeled certified to meet American National Standards Institute and American Society for Testing and Materials standard ANSI/ASTM F852-86. OSHA recently started allowing plastic jerry cans, but most are metal.

Several committee members noted that they had been fined \$500 for each wrong can they had in their facility. So don't delay! *To order from Nascoop, call (800) 321-3396 ext. 202 (Chuck Kinsey) or visit <http://www.nascoop.com/> (if you don't currently have an account, click membership tab and apply as an Associate). To order from Grainger, (first register through the ARA Marketplace at <http://ara.bizunite.com> to establish your ARA account#) visit [www.grainger.com](http://www.grainger.com) or call (800) 323-0620.*

---

---

## U.S. Federal Trade Commission (FTC) Reviews Used AutoParts Guides

FTC recently announced plans to review its Guides for the Rebuilt, Reconditioned and Other

Used Automobile Parts Industry" (Used Auto Parts Guides). This analysis is part of the Commission's periodic review of all current FTC rules and guides and will address the cost, benefits, and regulatory and economic impact of the Used Auto Parts Guides.

According to FTC, the Guides seek to prevent unfair or deceptive acts or practices in the advertisement and sale (including installation) of previously used motor vehicle parts and assemblies of parts containing previously used parts (e.g. engines and transmissions). The Guides are "administrative interpretations of laws administered by the Commission."

### — ANNOUNCING! —

Now you can **SAVE 40-80% OFF** normal printing industry prices at our **NEW Fully AUTOMATED Printing Website!** [www.MikeFrench.com](http://www.MikeFrench.com)

Mike French & Company, Inc.

Celebrating  
30 Years!



Proud to Be Serving Recyclers Since 1982!



# Auto & Truck Recyclers of Illinois Industry News

July/August 2012

17

The Commission first addressed the used automobile parts market in 1962, when it issued its Trade Practice Rules for the Rebuilt, Reconditioned and Other Used Automotive Parts Industry. In 1979 these rules were rescinded and replaced with the "Guides for the Rebuilt, Reconditioned and Other Used Automobile Parts Industry" (Used Auto Parts Guides or Guides). The Guides have been in place since that time, but were revised in 2002 to make minor language changes and to update the list of commonly rebuilt or reused parts and assemblies.

To help review the Guides, FTC is posing a long list of questions on which stakeholders can comment including:

- the need for and the benefits of the guides;
- necessary changes;

- how changes would affect small businesses;
- costs imposed on consumers by guides;
- how guides should incorporate new consumer perceptions of industry products; and,
- disclosure of certain installation information and information flow in general.

ARA looks forward to reviewing the Guides in depth and working with ARA members to provide comments to FTC in a concerted and effective manner. Comments are due by August 3rd. Stay tuned for more information on how you can help ARA develop comments on behalf of the profession.

*Reprinted with permission of ARA*

## ASSOCIATE MEMBERS

Please patronize all our Associate Members who generously support ATRI throughout the year.

### **Berlinsky Scrap Corp.**

Joliet, IL  
815-726-4334

### **Car-Part.com**

Ft. Wright, KY  
800-347-2247/859-344-1925

### **Chicago Industrial Catalytic**

Lincolnshire, IL  
312-914-6666

### **Donate A Car 2 Charity**

Escondido, CA  
760-755-2071

### **E & R Towing**

Markham  
708-333-7300

### **General Core Supply, Inc**

Chicago, IL  
773-767-6600

### **Hollander, A Solera Company**

Plymouth, MN  
800-825-0644

### **Miller Compressing Company**

Milwaukee, WI 53204  
414-671-5980

### **Insurance Auto Auctions**

Westchester, IL  
708-492/7000

### **James Environmental**

Round Rock, IL  
512-244-3631

### **Legend Smelting & Recycling, Inc**

Spring Valley, CA  
800-697-5556

### **LKQ Government Affairs**

Fort Lauderdale, FL  
954-492-9092

### **McNamara-Weaver Group**

Chicago, IL  
312-827-6651

### **Market Financial Group**

Shauburg, IL  
847-398-7060

### **Quad City Salvage Auction**

Oswego, IL  
630-897-8000

### **R.J. McClellan, Inc.**

St. Paul Park, MN  
877-525-4589

### **Recycle Technologies, Inc**

Wood Dale, IL  
630-350-8909

### **The Rogers Group**

Family Business Success  
Glenview, IL  
847-562-8992

### **RS Used Oil/Universal Lubricants**

Monee, IL  
708-325-6980

### **Snyder Insurance Co**

Bloomington, IL  
309-275-9987

### **Trissel, Graham & Toole, Inc.**

Insurance & Risk Management  
Sterling, IL  
815-625-0027

### **United Recyclers Group**

Centennial, CO  
303/367-4391

### **Waubonsee Community College**

Sugar Grove  
630-466-2331

### **Young Insurance Agency**

Rockford, MI  
616-214-4238



**Illinois Green Certified Automotive Recycler**  
**(Illinois Green CAR)**  
**Application Form**

Owner/Contact Name(s): \_\_\_\_\_

Business Name: \_\_\_\_\_

D.B.A. (If applicable): \_\_\_\_\_

Street Address: \_\_\_\_\_

City: \_\_\_\_\_ State: \_\_\_\_\_ Zip Code: \_\_\_\_\_

Mailing Address (if different): \_\_\_\_\_

City: \_\_\_\_\_ State: \_\_\_\_\_ Zip Code: \_\_\_\_\_

Phone: \_\_\_\_\_ Fax: \_\_\_\_\_

E-mail: \_\_\_\_\_

*I wish to apply for Illinois Green Certified Automotive Recycler (Illinois Green CAR) certification.*

*I agree to meet the Illinois Green CAR standards.*

*I agree to participate in the Illinois Green CAR auditing program to verify compliance with the Illinois CAR standards.*

*I agree to pay the Illinois Green CAR membership fee as established by ATRI.*

I agree to comply with the following guidelines:

- Be a member of ATRI, and meet the membership requirements.
- Appropriately display applicable Illinois Green CAR program identity and promotional materials. I agree to surrender same if ATRI membership is canceled or terminated.
- Improve my effectiveness as a business person and professional automotive recycler either through business courses and seminars offered by ATRI, or by recognized colleges and universities.
- To not knowingly purchase and/or sell automotive parts of questionable origin. An Illinois Green CAR member should take pride in his industry and business, thereby enhancing quality, customer service and confidence.

***Illinois Green Car Members***

***ABC Auto Parts and Sales, Inc.***  
***Auto Parts City, Inc.***  
***BC Automotive, Inc.***  
***Bionic Auto Parts and Sales, Inc.***  
***C & J Auto Parts, Inc.***  
***Elgin Super Auto Parts***  
***I-55 Auto Salvage***  
***Mack's Auto Recycling***  
***New Cats Auto Parts***  
***Rhodes Auto S/S/S, Inc.***  
***Rockford Auto Parts, Inc.***  
***Route 14 Auto Parts***  
***Scotty's Auto Parts***  
***Speedway Auto LTD***  
***Stafford's, Inc.***

*I understand that as the automotive recycling industry changes, the requirements to be an Illinois Green CAR member may also change, I agree to incorporate any such changes in my business. If I fail to do so, my Illinois Green CAR membership will be subject to termination.*

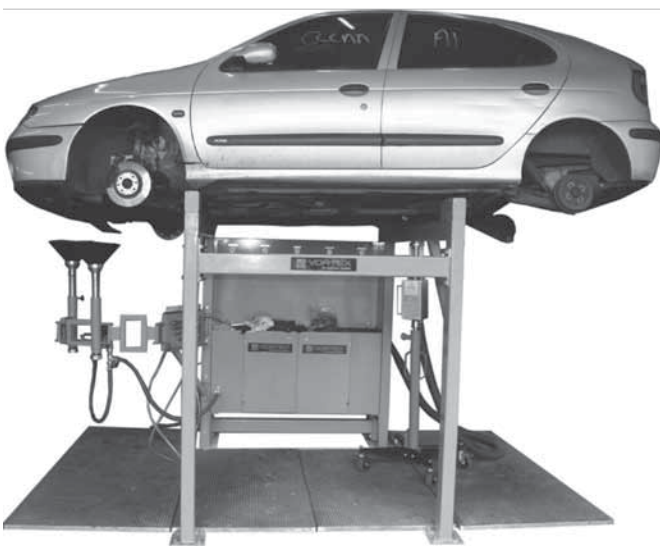
Business Owner Signature: \_\_\_\_\_ Date: \_\_\_\_\_

Staff Use Only: \_\_\_\_\_ (date received by ATRI)

*Mail to: Illinois Green Car, c/o ATRI, PO Box 654, Ottawa, IL 61350*

## Vortex De-Pollution Systems

### End of Life Vehicle Equipment



#### New Combined Stand, Fuel Extraction Tool, Oil & Coolant Drainer

This newly developed tool is a combination of 3 of our current well tried and tested tools. It starts off with a basic, heavy duty high stand that is designed with safety, durability and functionality in mind. There is a pump cabinet at the back of the stand which also functions as a work bench as well as a tool organizer. Inside this cabinet are mounted 4 double diaphragm pumps for clean gasoline, dirty gasoline, oil and coolant water.

We can use one pump for diesel and one for gasoline then fit a diverter valve to separate clean and dirty fuel, all the fuel comes from our low maintenance fuel tool head which punches a hole in the tank then vacuums our the fuel at around 10 gallons per minute. Because the head seal's against the tank we have no leakage or vapor escape from the system and the fuel is pumped directly into your tanks.

The stand has a double funnel oil arm which is the largest diameter drainage system in the world,

this helps prevent blockages and speeds up production times as well as reducing down time. The third part of the system is the coolant extraction spike which pierces the bottom of the radiator hose and sucks out the coolant.

#### Vortex Fuel Extraction Tool

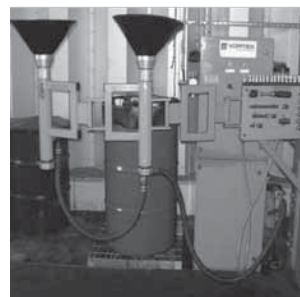
The Vortex Fuel Tool powered by compressed air punches through the fuel tank. A major improvement on drill based technology it leaves no steel swarf or plastic cuttings.

There is a complete seal around the fuel tool head and the gas tank, our no-drill solution allows fuel to be inspected for dirt or contamination and pumped as clean or dirty to maximize returns.

Our proven fuel punch head is connected to the dual pumped system to take the fuel directly to the tank farm.

Hi speed air powered double diaphragm pumps to EX specification are used throughout. Evacuating fuel at a rate of 10 gallons per min.

#### The Vortex Oil & Coolant Drainer



An easy to use system that will quickly drain used engine and transmission oils then pump it away to storage tanks. This avoids moving open tanks or drainers on wheels around the yard to empty them.

The oil extraction funnels have an oversized magnetic sump and double straining system to pre-



vent blockages, keeping the equipment running with minimum maintenance.

Supplied with a full set of drain plug keys and sockets all tooling is to hand to ensure the operation is carried out as quickly as possible. Coolant Spike penetrates lower radiator hose and coolant water is pumped away to storage tanks through 1" pipes to speed up the process and avoid blockages.

Manufactured in Colorado the Oil Drainer arm can be easily reengineered to suit specific customer requirements.

## The Vortex Overhead Oil & Water Drainer

The Vortex Overhead Pull-Down Drainer has been designed for fast draining of under-hood fluids. The brake fluid reservoir and power assisted steering fluid are pumped on one side and coolant from the expansion tank and or washer fluid on the other. The overhead also comes complete with either one or two pull down airlines for air-tools to remove wheels, drill brake reservoirs etc.

Manufactured in Denver this rugged swing-arm device can be engineered to suit the specification of the building.

## Vortex Mobile Fuel Extraction Tool

The Vortex Fuel Tool powered by compressed air punches through the fuel tank. A major improvement on drill based technology.

There is a complete seal around the fuel tool head and our no-drill solution allows fuel to be inspected for

dirt or contamination.

Can be fitted with manual fuel diverter option to separate clean and dirty gas for pumping to tank farm or other gas collection vessel.

Our proven fuel punch head is connected to the pumped system to take the fuel directly to the tank farm or to our mobile fuel caddies.

Hi speed air powered double diaphragm pumps to EX specification are used in the system for a safe, reliable & speedy extraction of fuel.

## The Vortex Complete Mobile Oil & Coolant Drainer

The Vortex Mobile Pumped Oil Drainer for fast draining of engine/gear box/differential oil.

Based on our successful fixed oil and water drainer using the same rubber collection funnels mounted on a fast acting mobile jack with braked castors. Oil is pumped away using 1/2" Air Operated Diaphragm pump.

Included in the oil system is a separate hose to remove under hood brake and PAS fluid.

In addition the tool is also fitted with Water Pump and coolant spike to remove coolant water from bottom radiator hose or under-hood reservoirs.

## High Stand

- Vortex De-pollution manufacture and supply a high stand suitable for use with our fuel tools and oil and water drainers and a low preparation stand suitable for under hood ELV equipment wheel removal and airbag deployment.
- The Vortex High Stand is a rugged alternative to a lift. Capable of supporting 10000lbs the high stand can safely support the largest vehicle likely to be encountered at a safe working height for fuel extraction, draining engine and gearbox oils and removal of coolant water.
- Unlike a lift, Vortex High Stand has been designed with blocks at each side to ensure the vehicles sits at the best angle to ensure the maximum amount of fuel and oil is recovered from the vehicle in the shortest time possible.

**"The Place for Parts"**  
**I55 Auto Salvage, Inc.**  
USED CAR & TRUCK PARTS

**877-467-2941**

PHONE: 815-467-2938

FAX: 815-467-7152

DAN - DAVE - DOUG - DON - TODD

22661 FRONTAGE ROAD • CHANNAHON, IL 60410



- Engineered in the USA the Vortex High Stand is a maintenance free alternative to a lift based system for overhead operations.



## Preparation stand( \$3100) and spill tray/walkway( \$2250)

- The low prep-stand is designed to make the job of removal of under hood fluids i.e. brake fluid, PAS, coolant water, screen wash and air con refrigerant easier and safer. The stand puts the vehicle at the correct height to safely remove wheels at this point.
- The galvanized banded platform is a useful addition to ensure the operative is at the right height to carry out all under-hood operations such as battery removal, brake fluid/PAS and screen wash.
- The wheels could be removed at this point using air tools connected to the overhead air supply, and shock absorbers de-polluted if required using the Vortex Shock Tool.

## Extraction of brake fluid, PAS, coolant & wash water

The positioning of the air reels on either side of the pump system makes it easy to attach air tools to remove wheels, drill, and remove windshields

## 560 gal. FIREGUARD above-Ground Horizontal Gas Tank

Fireguard® Tank represents the newest technology in fire-protected liquid storage. This tank is UL 2085 Labeled as a “fire-protected” and “fire-resistant” secondary containment aboveground tank with a 2-hour fire-rating. The Fireguard® Tank’s design incorporates lightweight thermal insulation encased between two walls of steel. The double wall steel design provides UL listed secondary containment. The lightweight interstitial insulation material is 75% lighter than concrete reducing the overall tank weight significantly when compared to competing concrete encased products.

Although this tank is considerable more than the standard gas tank it might be a requirement in some cities. Before any order is finalized it is suggested that you contact your local Fire Department to get a determination.

## 1100 gal. Above-Ground Horizontal Oil/Water

- Tank
- Two E-vents
- Gauge
- Cast Iron Plugs

Storage of Oil / Anti-Freeze: Double-Wall Construction Conforming to UL-142 Standards, 10 GAUGE CARBON STEEL PRIMARY TANK, 12 GAUGE SECONDARY TANK.

## Air conditioning refrigerant extraction unit

Supplied with high and low connections, hose, scales, and cylinder. The recovery system that we distribute is simple to set up and operate it switches itself off when the air con system is drained, the unit runs on a single valve control for easy changeover from liquid to vapor to purge. We also supply scales, recovery bottles and the easy gauge air con tester to see if the system is full or empty.



## FELCO Cable Cutter

Swiss made Felco cutters are recognized around the world for their precision manufacture and cutting capabilities. Lightweight enough for overhead cutting yet strong enough for underwater work.

Plastic coated handles afford a firm, comfortable grip. Replacement parts are available from stock.

**Type C12** – Capacity: 3/8" diameter and smaller.  
Length: 19". Weight: 3 lbs.

**Type C16** – Capacity: 5/8" diameter and smaller.  
Length: 23". Weight: 5 lbs.

## FELCO Hydraulic Cable Cutters

Cutter head swivels for difficult cutting positions

**HC-16** Capacity: 5/8" and smaller

Output: 4.4 tons 15" long, wt. 6.2 lbs

**HC-20** Capacity: 3/4" and smaller

Output: 4.4 tons. 15 1/8" long, wt. 6.4 lbs

## Vortex Airbag Deployment Kit.

The unit is designed to be connected to any electronically operated air bag or seat belt pretensioner either directly or through the vehicle's electronic control unit (ECU) Once connected to the ECU, all devices

can be deployed at once. The Vortex Airbag deployment unit is robust enough to withstand day to day use in both scrap and salvage yards. **NOTE: The ECU method of deployment is not yet set up for US cars; we are conducting tests to be able to release this as a full working tool shortly.**

## Vortex Cat Cutter

Vortex offer our hydraulic cutters the VC21 which gives a cutting force of 21 tons and is ideal for cutting through exhaust pipes to remove valuable cats, or the VC52 which offers a massive 55 tons of cutting force. The blade design guarantees optimal cut and unsurpassed ease of operation. This includes the air power pack requiring 150 psi @ 12 cfm.

## Air and Hand Tools

Vortex can offer a huge range of both air and hand tools specifically suited to the ELV de pollution process, we can build in work areas to speed up the process times, increasing the throughput of ELV's

## Compressors

Vortex can supply and install a full range of compressors matched to your needs and to ensure you get the best performance from your ELV equipment. We recommend a pressure of 150psi with a minimum of 40cfm.



## Wheel Crusher

The Vortex 830 wheel Crusher is the fastest solution for the safe separation of tires from wheels. With a capacity of up to 120 wheels per hour the Vortex 830 will outperform any other wheel crusher on the market today. With a maximum tire diameter of 32 1/2" and powered by a 22kw electric motor the 830 has all the Vortex characteristics of offering high performance, robustness and ease of use.

FOR MORE INFORMATION, CONTACT:

**LSB FINANCIAL**  
PETERSEN-HILL INSURANCE



**Pete Hill**  
VP / Commercial Insurance  
Email: PeteH@MyLSB.com  
Cell: (319) 240-2428



**Adam Brickley**  
Insurance Consultant  
Email: AdamB@MyLSB.com  
Cell: (319) 310-6225

**219 Main Street  
Cedar Falls, IA 50613  
Phone: (319) 268-4242  
Fax: (319) 268-4211  
Toll-free: (866) 907-4242**

You do so much to protect the environment.

Are you doing enough to protect your association?

Join the Auto and Truck Recyclers of Illinois and ...



- ... have your voice heard by government
- ... take advantage of training opportunities
- ... learn more about IL Green Car certification
- ... keep up to date with the ATRI News
- ... use the association website to further your business and sell parts

Contact Michelle Lechner at 877-880-2874 for more information

(or see The Member Benefits and Membership Application form on pages 7 & 8 of this newsletter)

This newsletter, the ATRI News, also needs your support.

**ATRI**  
News

Consider placing an advertisement  
in the ATRI News.

Ad pricing starts at only \$55.00 per issue.

Contact our publisher RJ McClellan, Inc.  
for more information about placing an ad.

Layout fees waived with 1 yr./6 issue contract.

Contact RJ McClellan at 877-525-4589 or newsletters@rjmc.com



ATRI 0712

## ATRI News

RJ McClellan, Inc.

445 Broadway Avenue #5

St. Paul Park, MN 55071

Change Service Requested

PRESORTED  
STANDARD  
U.S. POSTAGE  
**PAID**  
Twin Cities, MN  
Permit No. 7911

Introducing our exciting new add-on to  
Internet Checkmate!



# OrderTrakker™



*Know where your customer's  
part is at any stage of the  
production process!*

<http://products.Car-Part.com> • 859-344-1925

Car-Part Industry  
Conference  
August 9-11, 2012  
Open to all auto  
recyclers

Car-Part.com



# CrashLink™

## Integrated Crash Guide

❖ OE interchange

❖ Fast F-key lookup

❖ OE Diagrams

❖ Automatic updates

**859-344-1925**  
<http://products.Car-Part.com>

❖ **Pricing calculator**  
helps value assemblies, interchange and  
non-interchange parts for collision repair pricing.

Car-Part.com

